

PHYSICAL AND ELECTRICAL SPECIFICATIONS

Size: 5-5/8"(L) x 4-1/8"(H) x 2-1/4"(D); (14.17 x 10.48 x 5.72 cm)
Weight: 1.2 pounds (.54kg) (including transformer); Material: ABS Plastic
Electrical: External, wall mount transformer (UL, CSA, TUV, CE, etc.)
Normal household current (adapted to 9-12V DC)
6 foot cord (1.83 m) with 2.5 x 5.5 mm power plug
Speaker: 3 inch (7.62 cm), 8 ohm

Please fill in the data below for your records. This will be helpful should you need to file a claim under warranty or if the need for repair should arise.

Product Name/Model No. Zohne

Serial No. _____

Date Purchased _____

Registry Card Mailed _____

The completion and mailing of your Registry Card (or filling out the registration form online) will register you as the proud new owner of this Marpac product. It will assist us in processing warranty claims and repair orders in the unlikely event this becomes necessary. Please fill in the serial number, your name, your address, and the date of purchase. If you've got time, we'd really appreciate answers to the other questions, too - we use this information as we try our very best to provide superior products and quality service to our valued customers

LIMITED ONE YEAR FACTORY WARRANTY

(Did you know that our products often last for decades? Impressive, isn't it?)

Marpac warrants this product to the original purchaser to be free of defects for a period of one year from the date of purchase. The limited warranty covers all parts and/or workmanship against defects or breakage in normal intended use. The warranty does not cover any damage caused by accidental dropping, rough handling or misuse of the product; including tampering; or improper use of power supply or plug adapters. Altering or tampering with the serial number will also void this warranty. This warranty gives you specific legal rights; you may also have other rights, which vary from state to state.

IF YOU NEED SERVICE

(We want to help you!)

A) WITHIN THE WARRANTY PERIOD - Return the product to us, postage paid, for a no charge repair or replacement at our option. Please include some form of proof-of-purchase. In cases where your sound conditioner was received as a gift, please record the date you received the gift, the name and location (if possible) of the store or catalog from which the unit was purchased.

B) BEYOND THE WARRANTY PERIOD - Return the product, postage paid, for repair at a reasonable cost. Describe what appears to be the problem. Standard repair costs and shipping information can be found on our website: www.marpac.com.

Please pack the product well to avoid damage in transit. Always include your name, shipping address and a brief description of the problem. We suggest a shipping means that allows for tracing lost packages.

Information and Instructions

Zohne



marpac 
MADE IN USA

Serious Sound Conditioning
made in the USA since 1962
www.marpac.com

GENERAL INFORMATION

Congratulations on your purchase of the Zohne! You now own one of the finest sound conditioners available today. Taking a few moments to read this information will help you become familiar with the use and operation of the Zohne.

The Zohne uses solid state technology to create white noise emulating either Rain/Waterfall (CONSTANT) or Surf (WAVE) sounds. The tone and volume of this sound is widely adjustable to help mask unwanted, uncontrollable noises, or to create a comfortable level of ambient sound where extreme quiet is prevalent and the slightest noise can be disturbing.

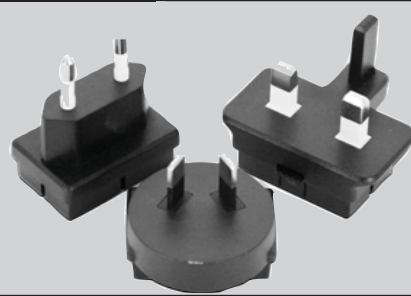
Compact in size for personal, portable sound escape, but big on sound, the Zohne is ideal for anyone wanting to escape life's noisy distractions and sleep deeper, relax easier, concentrate better, or stress less. This is (even more!) serious sound conditioning from Marpac, makers of the Dohm - the world's original and most popular white noise machine.

ABOUT YOUR POWER SUPPLY

Your new Zohne is equipped with a "universal voltage" wall transformer (power supply) which permits the Zohne to travel anywhere in the world.

The transformer will automatically switch between 100 and 240 Volts AC and does not require a converter.

Also included are four separate plug adapters for use in the United States, Europe, the United Kingdom, and Australia. (The Zohne ships with the US plug in place.) To change the adapter, simply press the tab and gently pull to dislodge the plug attachment from the transformer body.



SIDE PANEL - VOLUME AND TONE CONTROLS



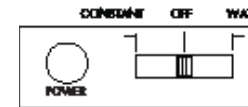
The volume control is located on the right underside panel of the Zohne. Sliding the volume control toward the wide end of the arrow indicator will increase the volume level. Sliding the control to the narrow end of the arrow will decrease the volume level.

A similar slide control located on the left underside panel is used to adjust the



tone of your chosen sound. When operating the Zohne in the CONSTANT mode, this control is used to move between RAIN (more treble) and WATERFALL (more bass) creating a wide variation of sound between the two settings. This control also functions as the tone control for the WAVE setting. Some minor experimenting with sound selection and control positions will produce the sound best suited to your noise masking requirements and your sound conditioning tastes. Hey, with a little imagination you just may find yourself mentally escaping to a tropical paradise...

BACK PANEL - POWER AND SOUND SELECTION



On the back panel of the Zohne you will find a small recessed area containing a power input jack and a three-position slide control. First, insert the 2.5mm x 5.5mm plug of the transformer cord into the power input jack and plug the transformer into an appropriate household-type electrical outlet. Located to the right of the power input jack is a three-position sound selector, on/off slide control. As indicated by the legend, the center position is OFF. Sliding the switch control button to the left will activate the CONSTANT sound, and sliding it to the right will activate the WAVE sound. You may not notice an immediate difference as you change from Constant to Wave, because the sound source for these settings is the same, but after a few seconds you will notice the soft modulation of gentle waves when the Wave setting is selected. The Constant setting produces a steady, continuous sound at your chosen tone and volume and is the best choice for situations requiring maximum noise-masking power.

PLACEMENT

The Zohne is most effective when placed so that its sound can "fill the room." Ideally, it should be positioned a short distance away from you, as illustrated here. If disturbing noises are coming from a specific direction, it can also be helpful to place the sound conditioner between yourself and the primary source of noise. This positioning allows for maximum noise-masking; use sound selection, tone, and volume controls to further improve masking power.

